

The Subtle Art of Making Sense of Your Business Data



Yaroslav Lazor

CEO, Railsware



railsware
Product Studio

About me and Railsware

My experience

- ✓ 23 yrs in pro tech, first code at the age of 10
- ✓ Engineer by heart, turned CEO by need
- ✓ Company \$100+m eval and 200+ people, 5x growth in last 5yrs

Relevant expertise

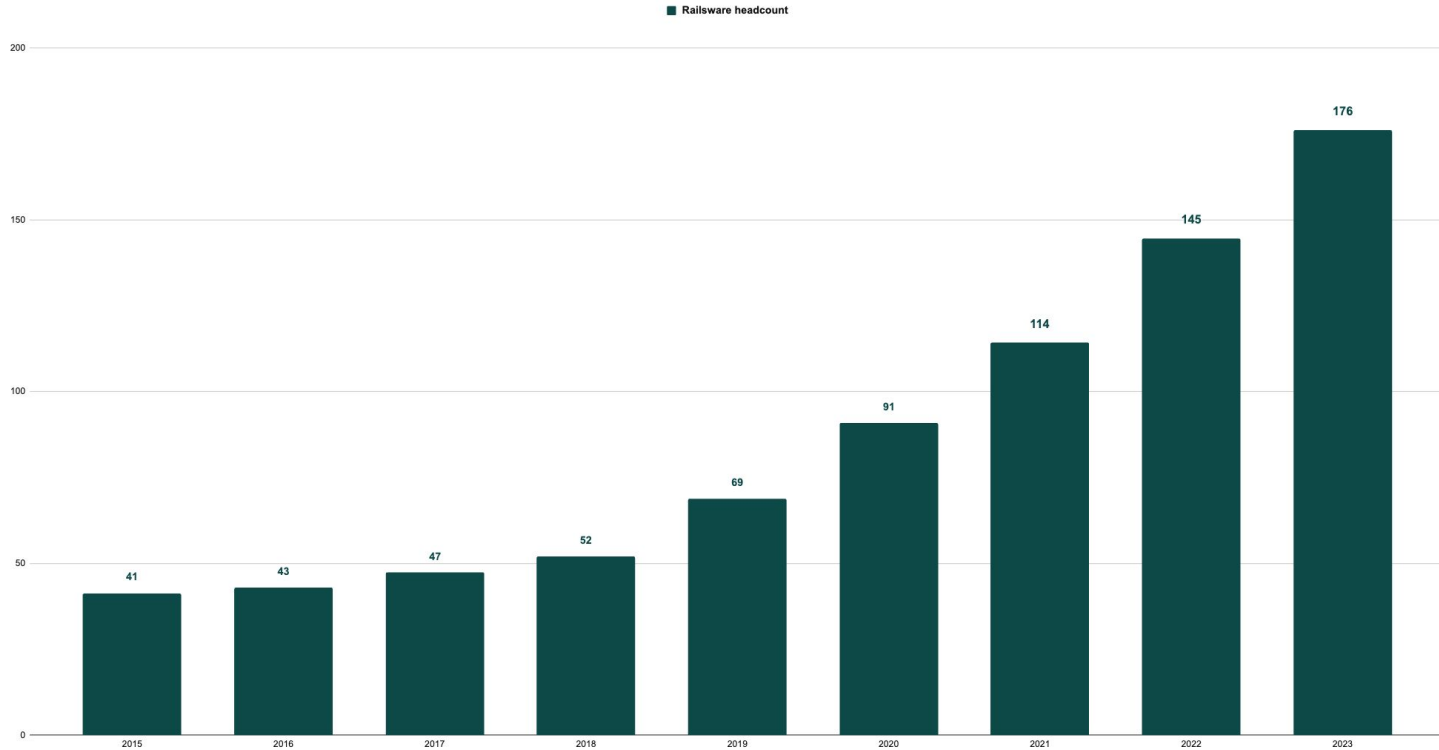
- ✓ Data product Coupler.io
- ✓ TitanApps and other SaaS
- ✓ Consultancy

Benefit of this presentation

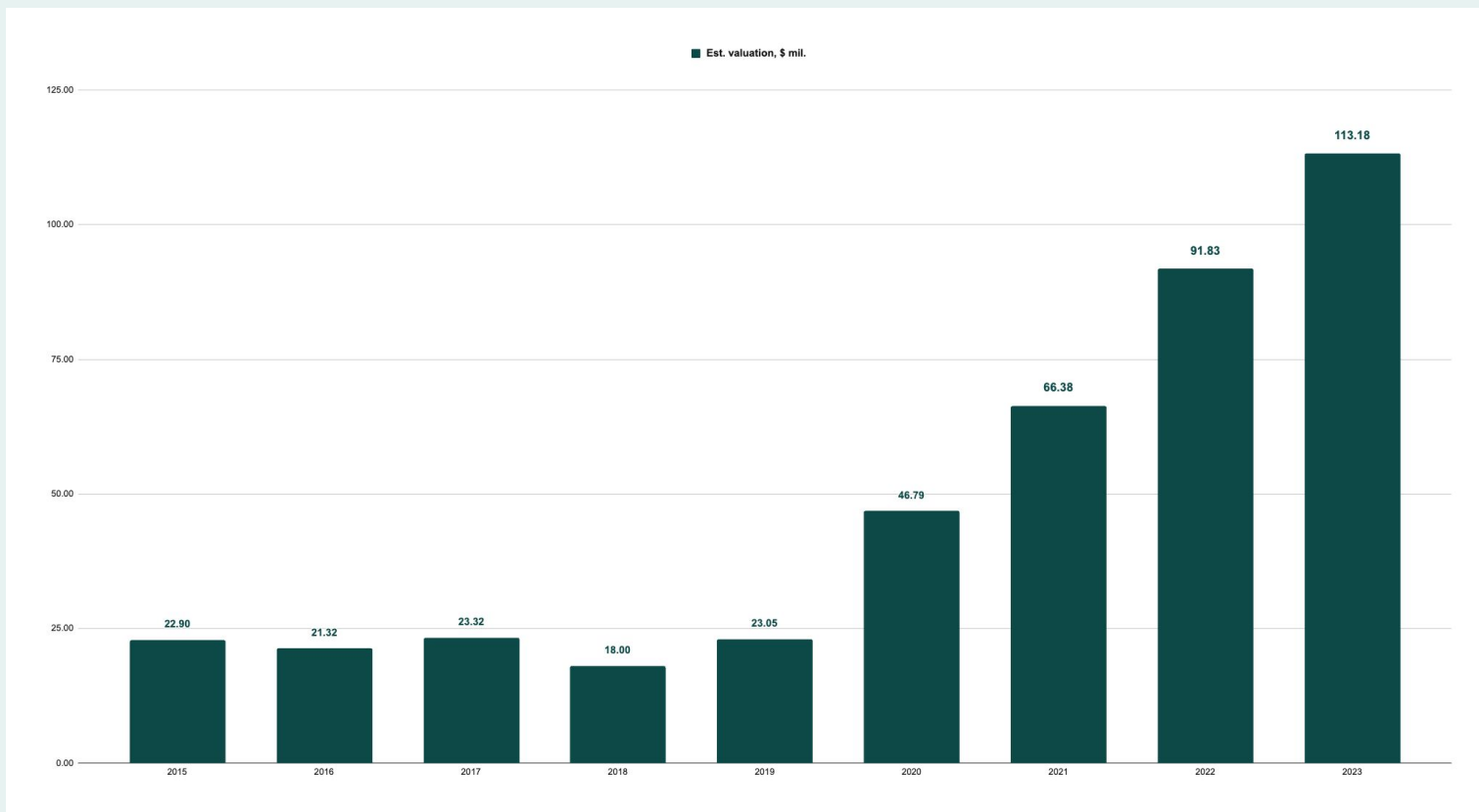
- ✓ Practical approach in helping you SEE and map your IDEAS and REALITY based on data
- ✓ Share our lessons learned, so you don't have to suffer



Team growing



Where we stand



Over the next 20 minutes

I'll explain to you

WHY MASTER YOUR DATA

- ✓ A lesson from a \$120k spreadsheet mistake
- ✓ What made our CFO sick – and how we cured it
- ✓ Hyper-detailed P&L vs. hidden monsters

WHAT DATA IS THE BEST

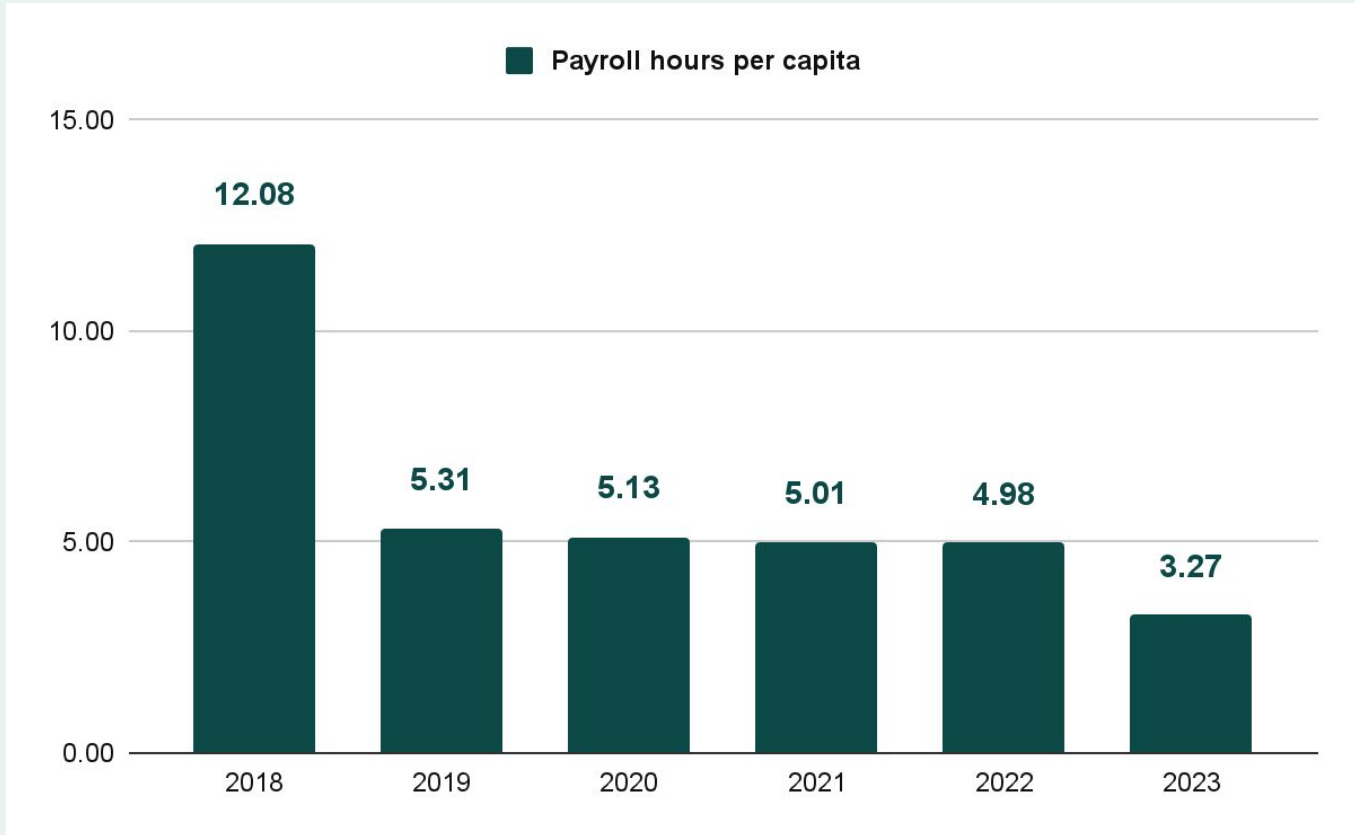
- ✓ Become a spider and build your web of data
- ✓ Always redesign your spider web for visibility
- ✓ Make your own “dashboard of dashboards” with what interests you

HOW TO MAKE ART OF DATA

- ✓ You + data extraction tools + GSheets = ❤️
- ✓ Analysts + data science + dashboard tools = 💪
- ✓ Your business + organized data + 3D view = 🧑🏻💻



Turning CFO nightmare into a piece of cake



Let's Start with Section 1

I'm going to show you

SAY BYE TO HUMAN ERRORS



How a \$120k spreadsheet mistake made us never trust manual processes again

AUTOMATION MAKING WONDERS



How a 15-day custom payroll to 20 countries made our CFO sick – and led to an automated process done within half of a day

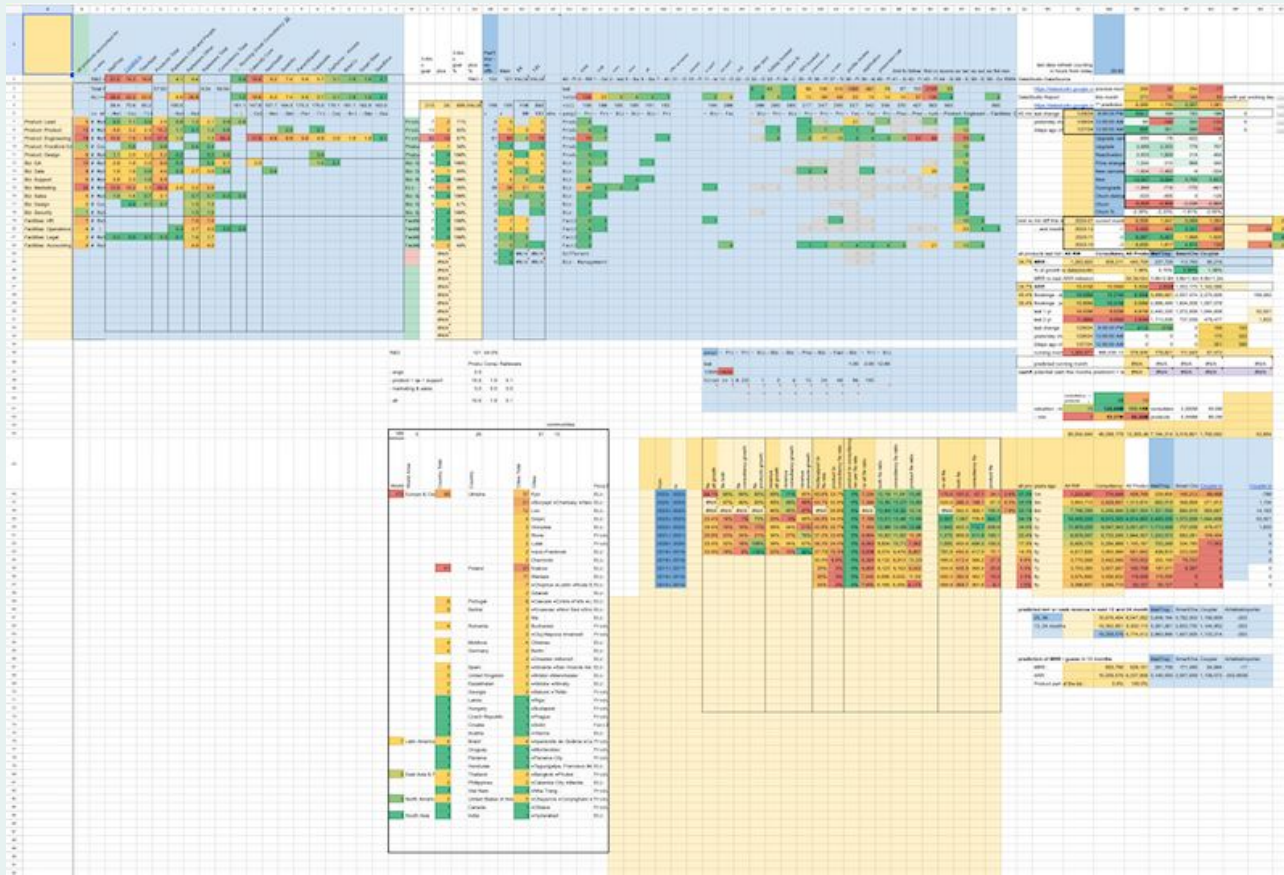
WAY TO A ZERO-EFFORT FULL VIEW



How a hyper-detailed P&L helped us know and not be afraid of hidden monsters and led to a zero-effort full view of business

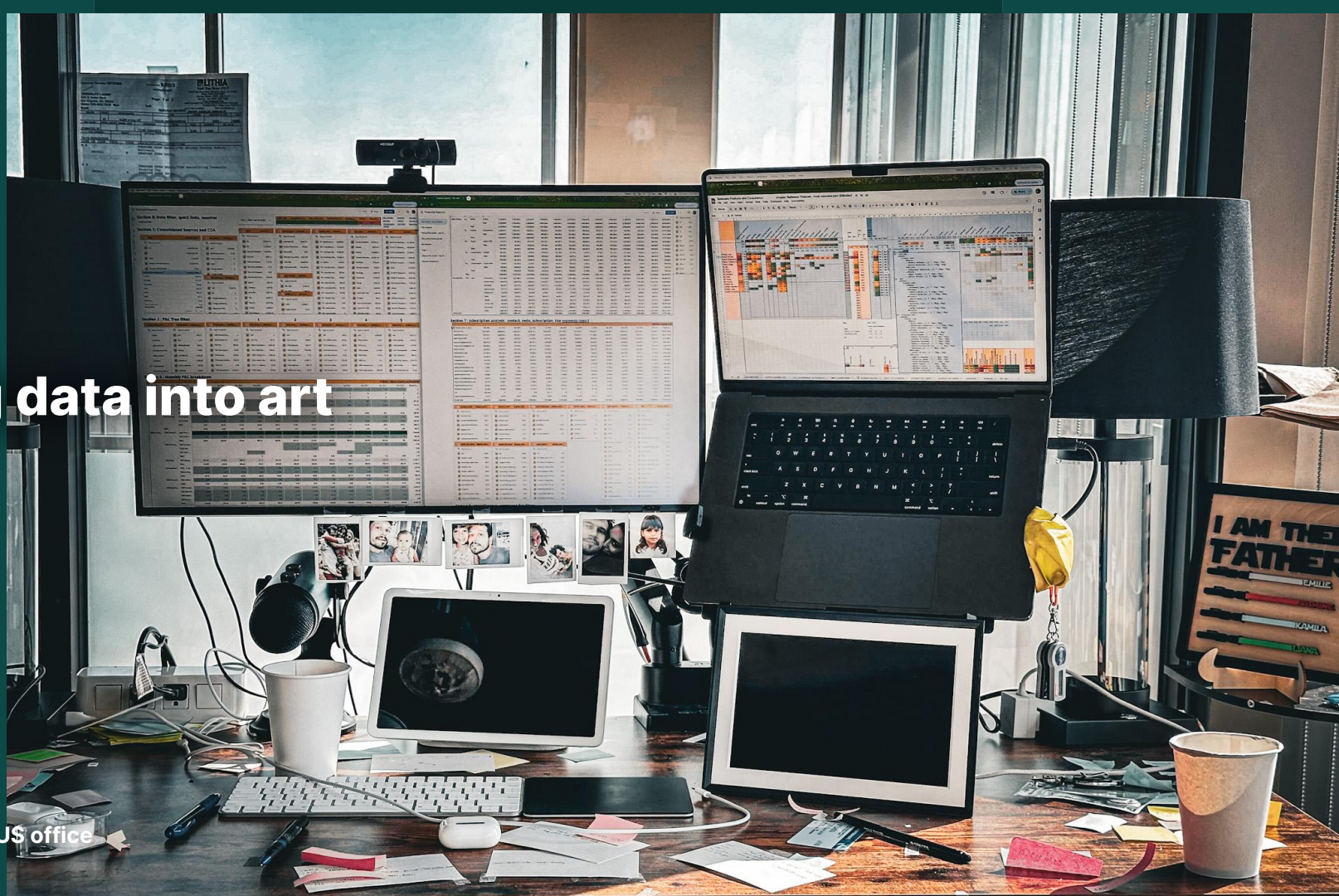


A dashboard of dashboards can look like this



Turning data into art

2024, Railware US office



Get insights that matter



Let's jump into Section 2

I'm going to show you

YOUR DATA WEB

- ✓ Become a spider, build your web of data, and see which one is shaking

ADAPT CONSTANTLY

- ✓ Always redesign your spider web for visibility

A DASHBOARD TO RULE THEM ALL

- ✓ Execs should make their own "dashboard of dashboards" with what interests or troubles them



Let's jump into Section 3

I'm going to show you

DATA EXTRACTION TOOLS

- ✓ You + data extraction tools and GSheets =
 - non-blocking,
 - fast to iterate,
 - understandable
- foundation that shows a lot about your business processes

DATA SCIENCE TOOL

- ✓ Analysts + data science and dashboard tools =
 - stable
 - long-term,
 - built on the foundation,
 - built to last

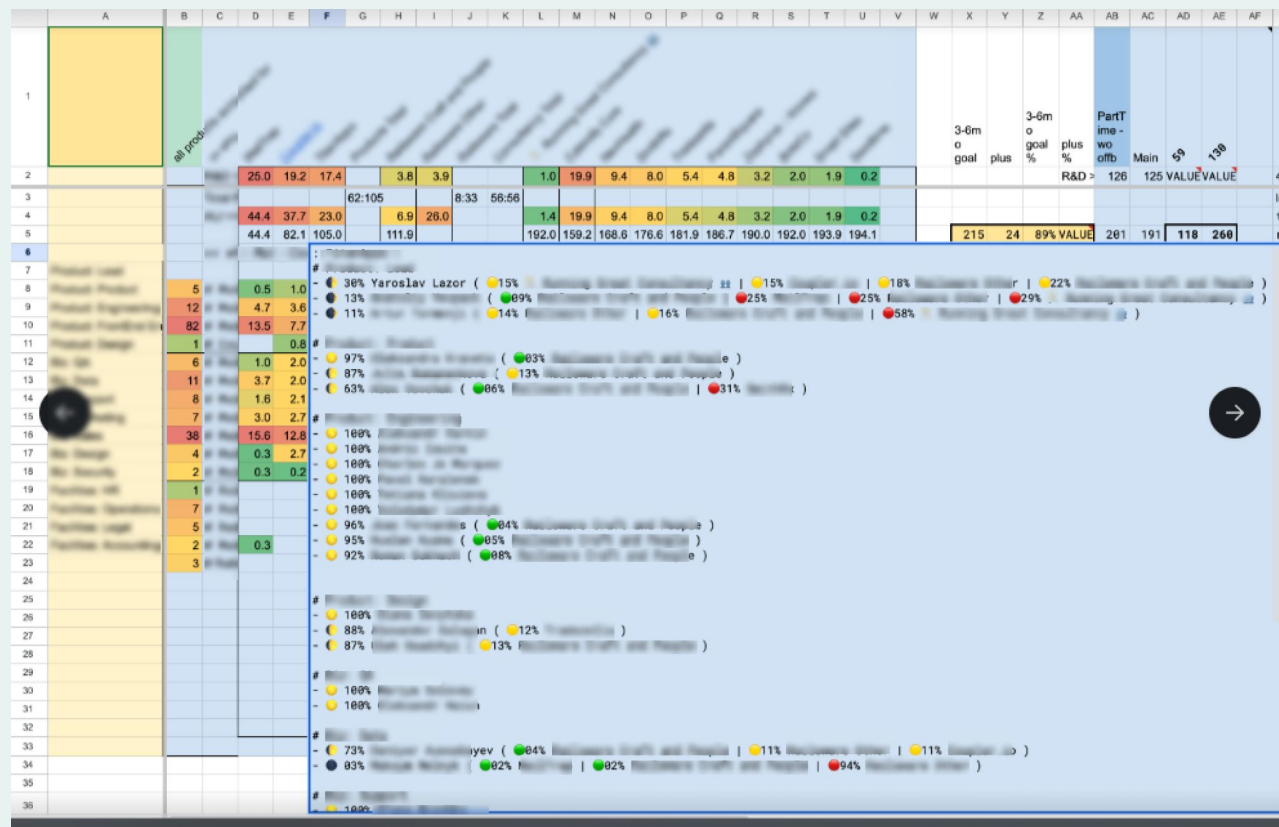
RAILSWARE DATA TRICK

- ✓ How you can reimagine your view of business with the 3D data shape

3D data shape – go from ordinary...

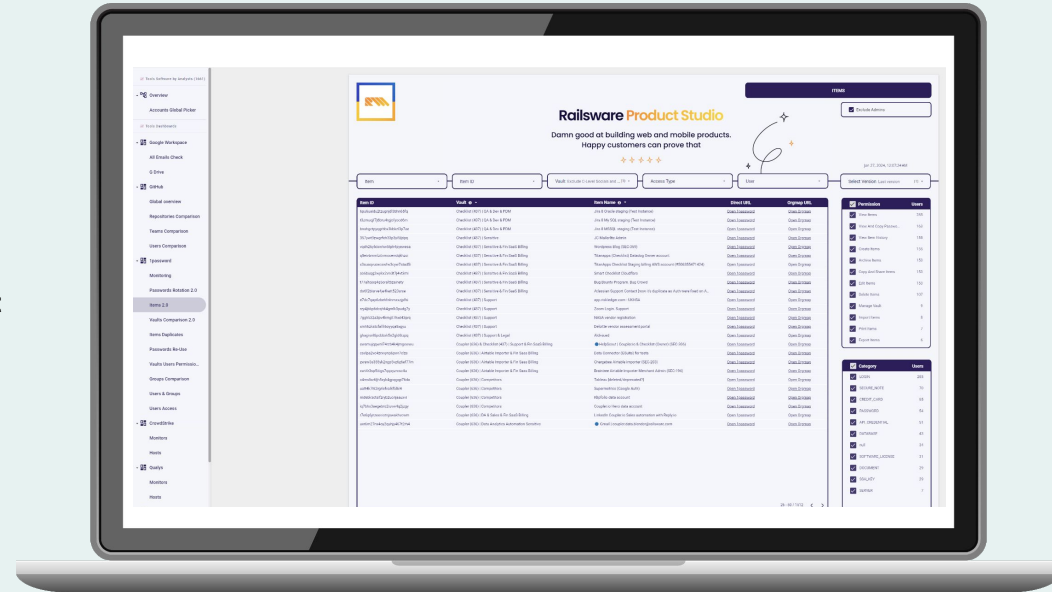
[illegible]

...to extraordinary



Top Keywords

- ✓ Data **mastery**
- ✓ Automated processes
- ✓ Hyperdetailed view
- ✓ Your **web of data**
- ✓ Constant **improvement**
- ✓ Strategic **insights**
- ✓ Adaptive **dashboards**
- ✓ **3D shape** of data



Over the last 20 minutes...

I showed you:

WHY YOU NEED TO MASTER YOUR DATA

- ✓ How a \$120k spreadsheet mistake made us never trust manual processes again
- ✓ How a 15-day custom payroll to 20 countries made our CFO sick – and led to an automated process done within half of a day
- ✓ How a hyper-detailed P&L helped us know and not be afraid of hidden monsters and led to a zero-effort full view of business

BEST DATA IS THE ONE YOU ACTUALLY LOOK AT

- ✓ Become a spider, build your web of data, and see which one is shaking
- ✓ Always redesign your spider web for visibility
- ✓ Execs should make their own “dashboards of dashboards” with what interests or troubles them

THE ART OF DATA

- ✓ You + data extraction tools and GSheets = non-blocking, fast to iterate, understandable, builds the foundation and shows a lot about your business processes
- ✓ Analysts + data science and dashboard tools = stable and long-term, built on the foundation, built to last
- ✓ Railsware data trick: Reimagine your view of business with the 3D data shape





Thank you!



Yaroslav Lazor

CEO, Railware



railware
Product Studio